

# Pierce Creek

VILLAGE



PIERCE STREET

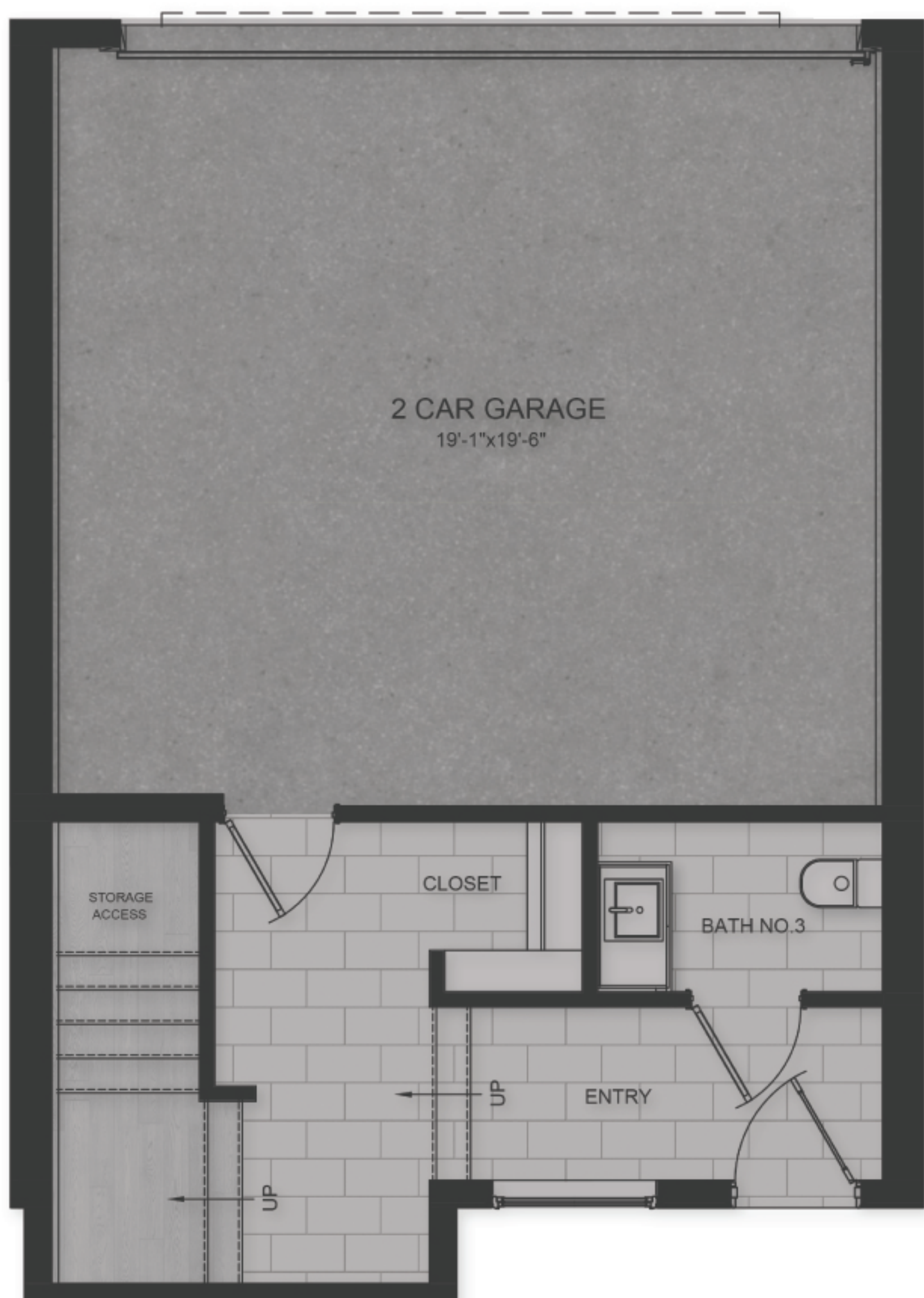
WEST 14TH AVENUE

## Pollock

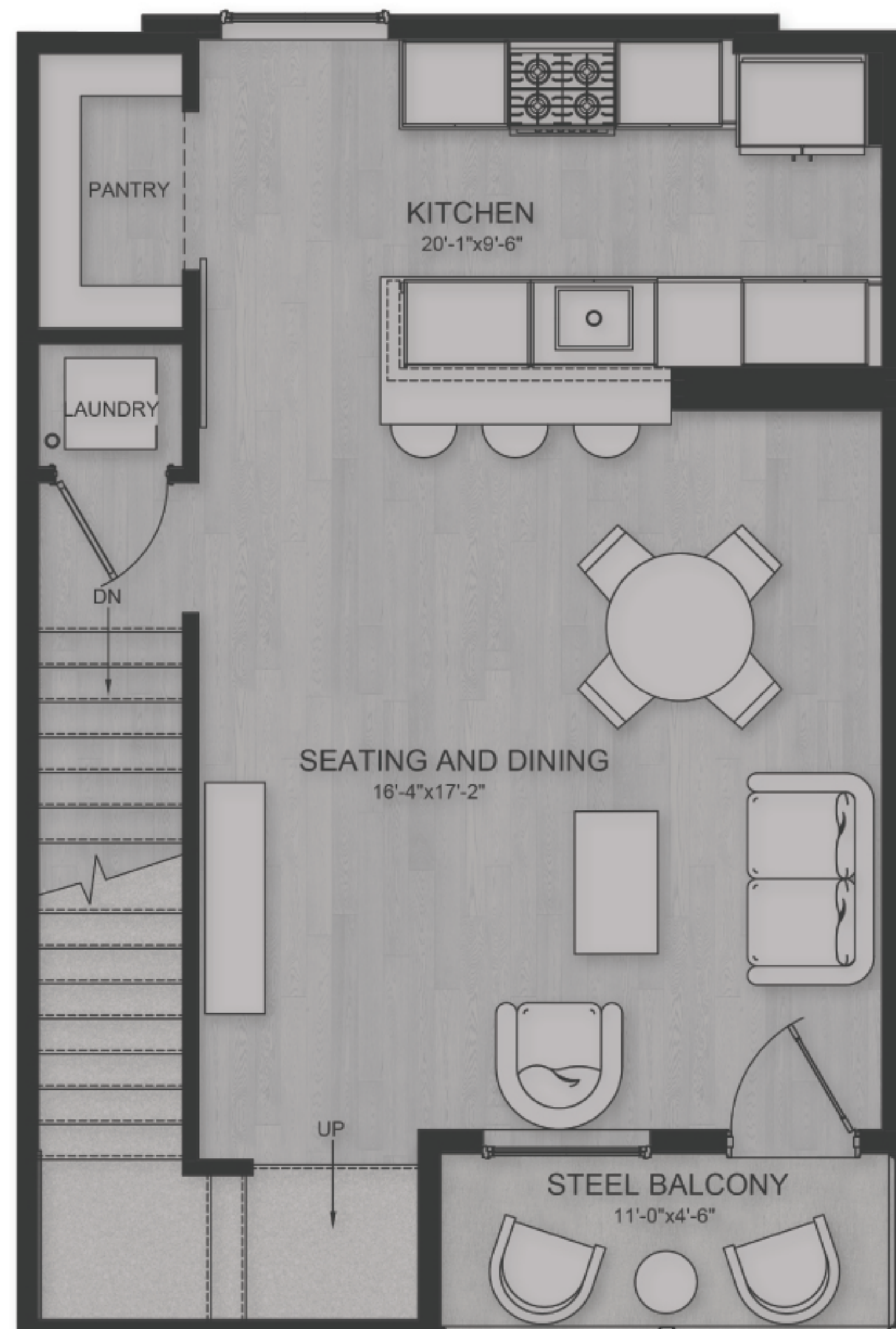
2,444 SF Townhome  
3-bed, 3-bath, 2 Car Garage

Sprawling Primary Suite  
Main & Primary Level Patios

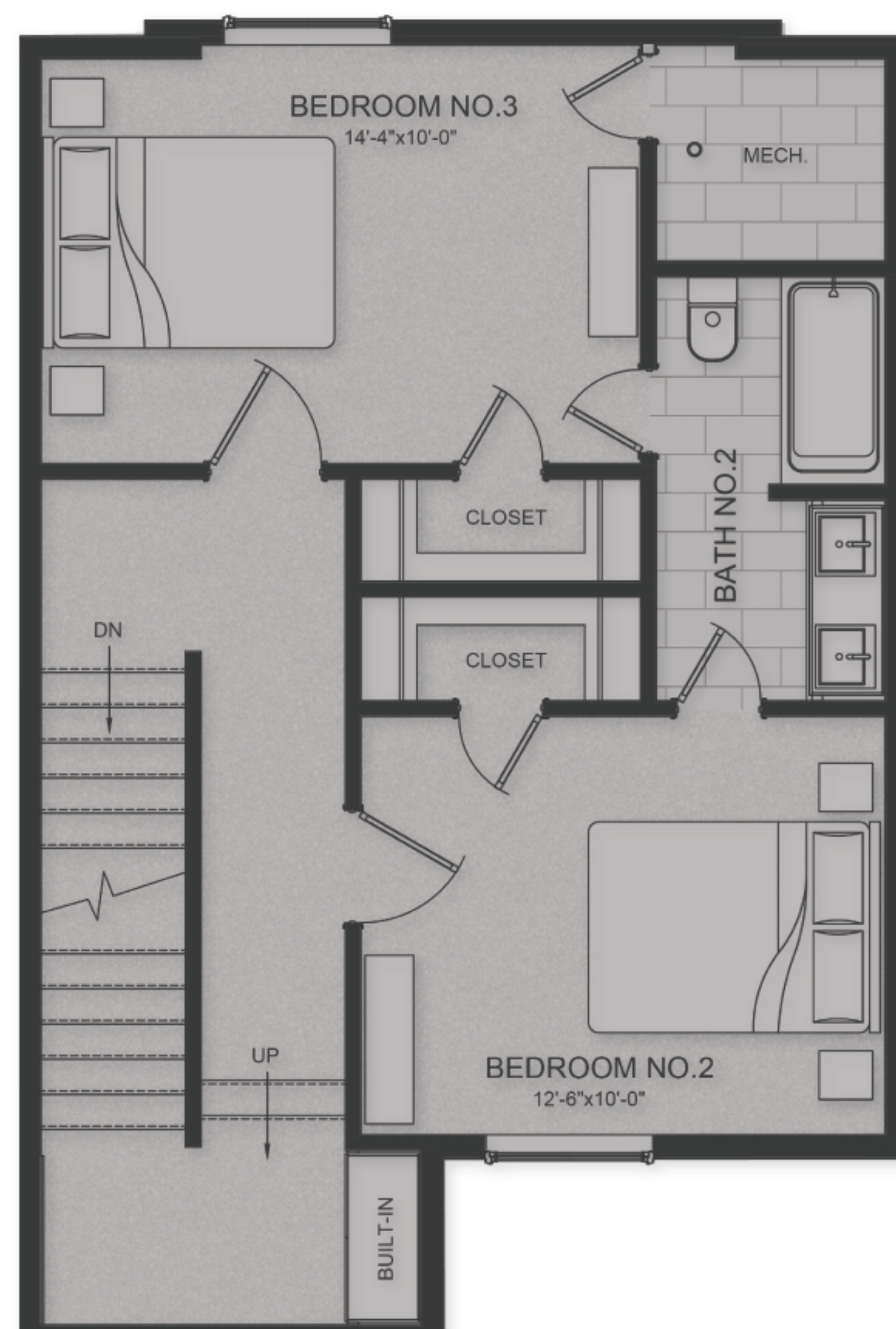
**Pollock Ground Level**  
623 SF



**Pollock Level 2**  
607 SF



**Pollock Level 3**  
607 SF



**Pollock Level 4**  
607 SF

