

# Pierce Creek

VILLAGE



WEST 14TH AVENUE

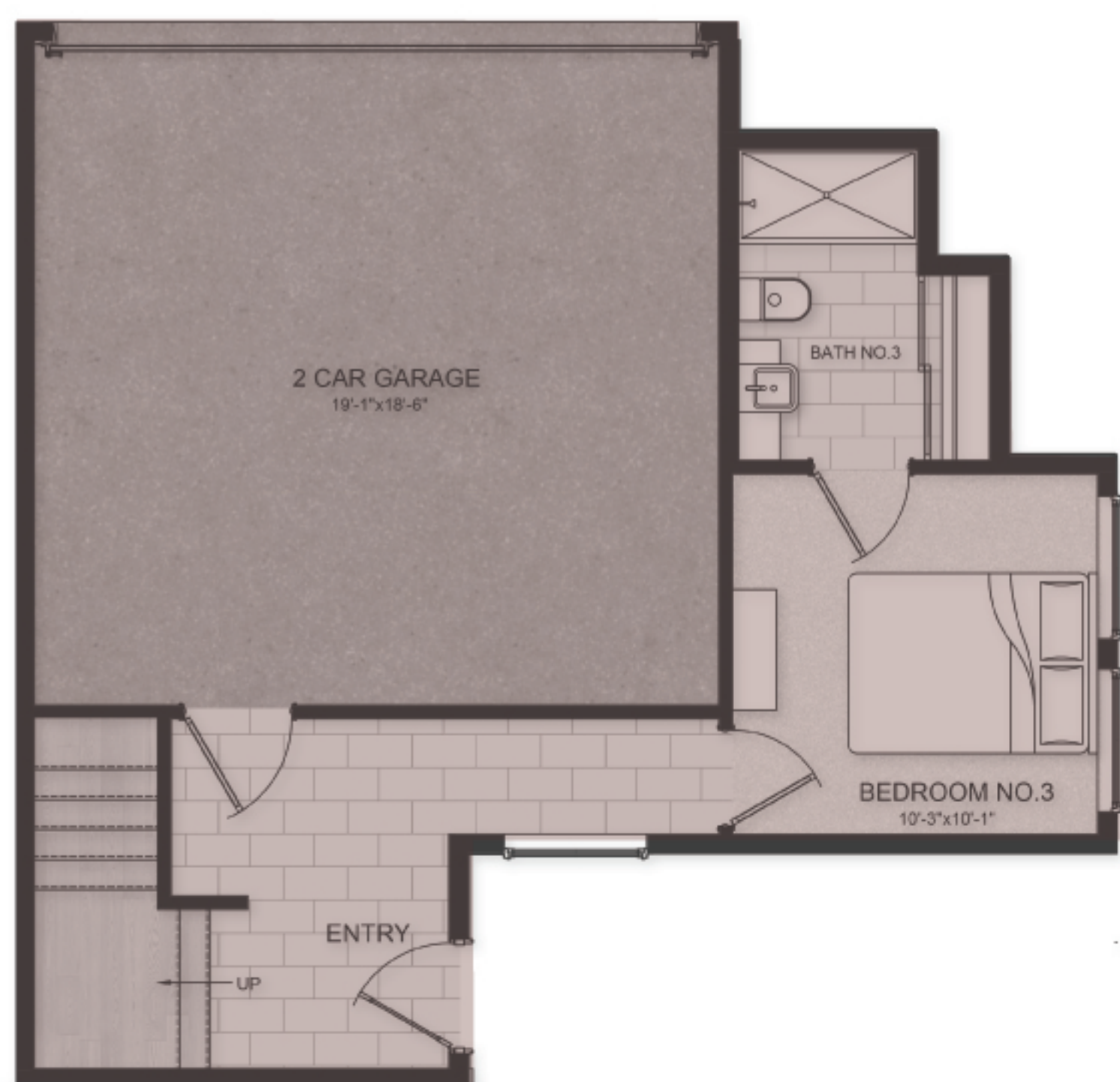
PIERCE STREET

## Kahlo

2,249 SF Townhome  
3-bed, 3-bath, 2 Car Garage

Ground Floor En Suite  
Main & Rooftop Level Patios

**Kahlo Ground Level**  
720 SF



**Kahlo Level 2**  
715 SF



**Kahlo Level 3**  
711 SF



**Kahlo Rooftop Patio**  
103 SF

